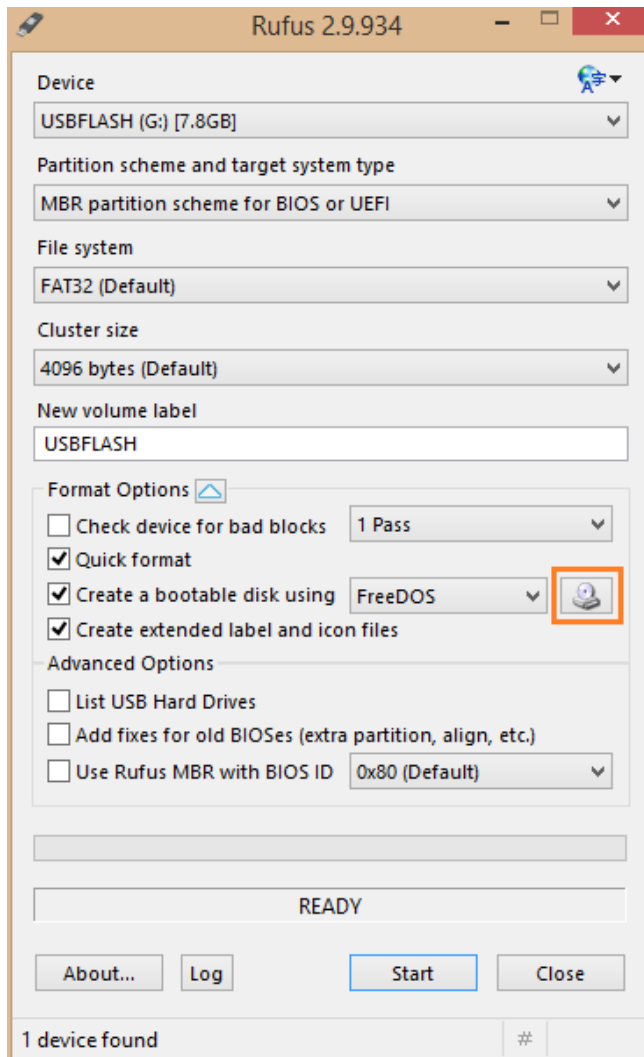


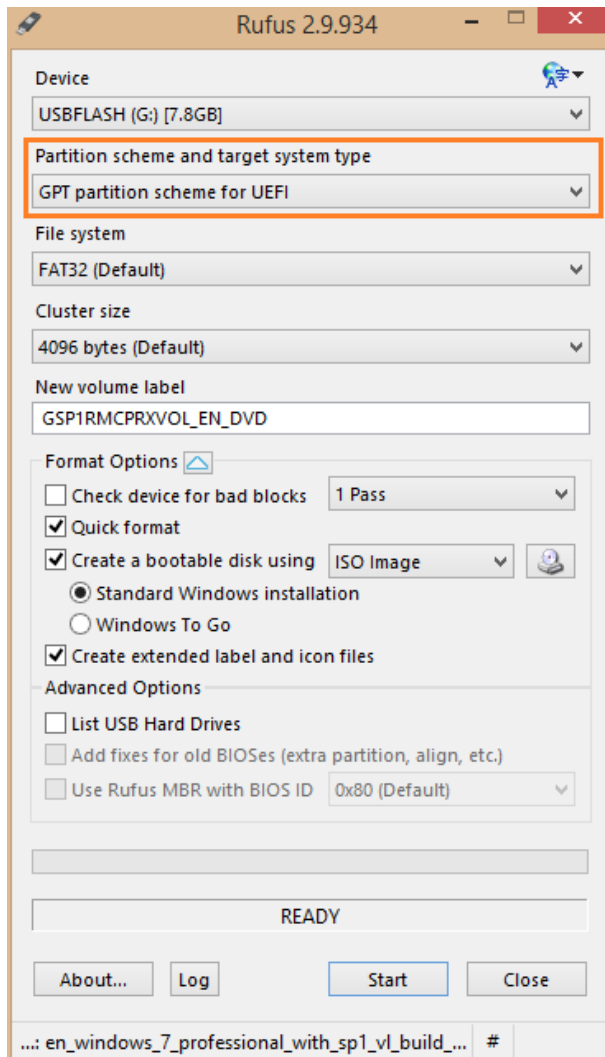
aGuide to Create a Windows 7* UEFI Installer

Materials Needed:

- Rufus (<https://rufus.akeo.ie/>)
 - Windows 7* ISO
 - Intel® Windows 7 USB 3.0 Creator Utility (<https://downloadcenter.intel.com/download/25476/Windows-7-USB-3-0-Creator-Utility>)
 - USB Flash Drive
 - Computer running Windows 8.1 or above
1. Download and install Rufus onto the same computer that contains the Windows 7 image.
 2. Plug the USB flash drive into the computer where Rufus was installed.
 3. Launch Rufus and select **YES** on the User Account Control dialog box.
 4. Select the CD/HDD icon and select the Windows 7 ISO, then select **Open** to load the image.

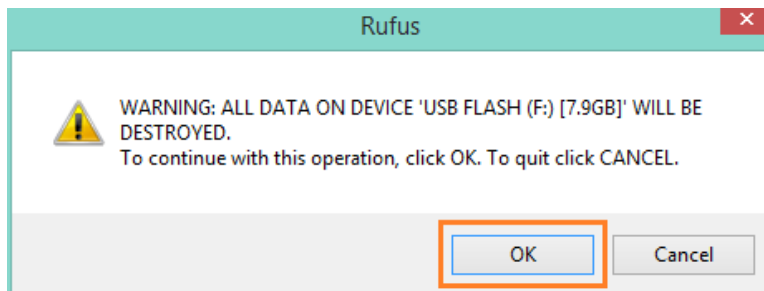


- To ensure that the USB flash drive is UEFI bootable, change **Partition scheme and target system type** to **GPT partition scheme for UEFI**.



- Click **Start**, then **OK** to write the Windows 7 image to the USB flash drive.

NOTE: As the warning says, **Everything** on the flash drive will be erased.



7. When Rufus is finished, follow the instructions in the "Installer_Creator_readme.pdf" that is in the "Win7-USB3.0-Creator-V[x]" folder, and Install Windows 7.